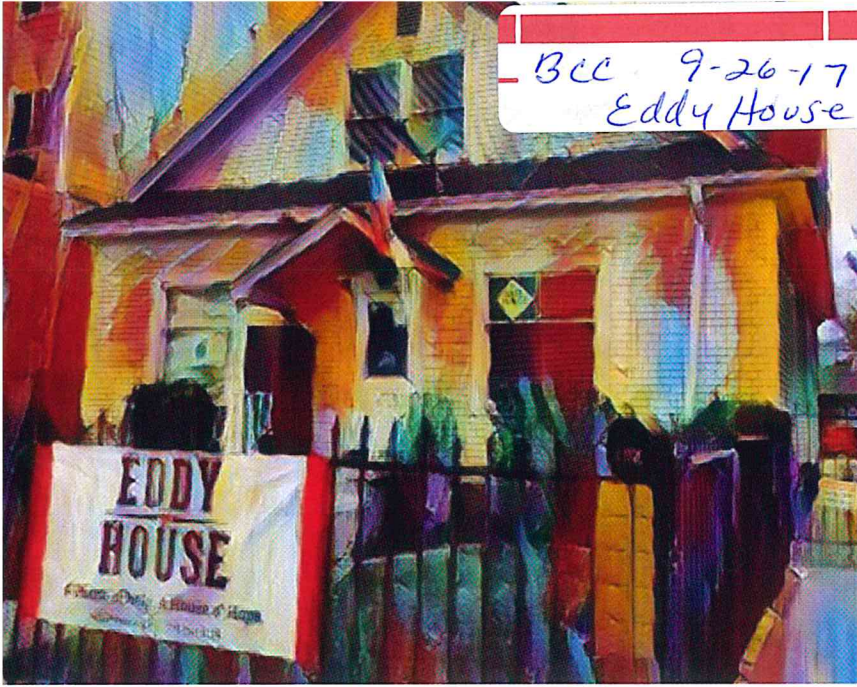


The attached document was submitted to the
Washoe County Board of Commissioners during
the meeting held on September 26, 2017.
by Eddy House
for Agenda Item No. 6
and included here pursuant to NRS 241.020(8).



BCC 9-26-17 #6
Eddy House

EDDY HOUSE

House of Help. House of Hope.

Drop-In Resource Center
Open Monday through Friday
10 a.m. to 5 p.m.

Mission Statement

The mission of Eddy House is to promote self-sufficiency and empowerment to homeless, runaway, foster, and at-risk youth ages 12-24 in an individualized relationship based, trusting environment and offering safety, basic needs and access to community resources in Northern Nevada.

Eddy House is the central intake and assessment facility in Northern Nevada. The objective of Eddy House is to end youth homelessness in Reno, Nevada. To accomplish this, we identify homeless, at-risk, and aged-out foster youth through extensive outreach in Downtown Reno.

Looking Forward

2017 Maintain Eddy House Drop-In Center and expand services and hours

2017-2018 Expand to a 24-hour Drop-In Center with a nighttime facility

2017-2021 Expand partnerships within the community to avoid duplication and be a responsible fiduciary of donor and grant funds

January 2017 - June 2017

Eddy House has provided services to over 400 youth. In the 4th week of March we more than doubled our demand for basic needs services.

For more information please contact
Michele Gehr | director@eddyhouse.org | 775-384-1129

2016-2017 Intake Survey Data

- ♥ 77% are safer on the streets than they were at home
- ♥ 70% are male
- ♥ 60% attended Special Ed Classes or had an IEP In Washoe County
- ♥ 47% were homeless before their 18th birthday
- ♥ 47% do not have a high school diploma or GED
- ♥ 45% exchanged sex or labor for food, shelter, or clothing
- ♥ 44% need help getting a SSN, ID or Birth Certificate
- ♥ 45% in Foster Care - 18% Aged out of Foster Care
- ♥ 38% are parents
- ♥ 18% aged our of foster care

HUD Youth Point in Time Count 2017*

HUD data collected by surveying street youth for 24 hours

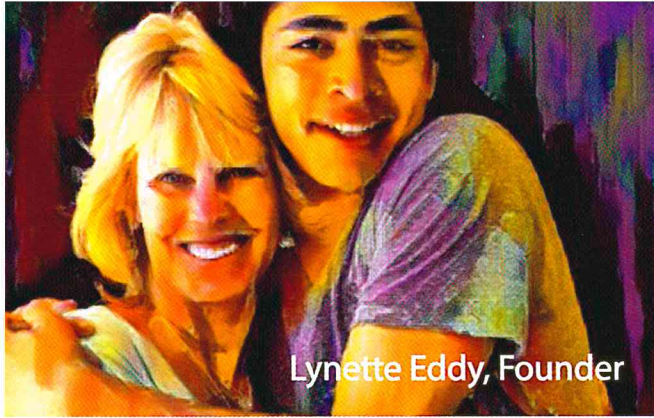
- ♥ 67% stayed overnight or longer in jail, prison, or a juvenile facility
- ♥ 51% report losing housing over sexuality or gender identity
- ♥ 45% stayed overnight in a treatment or healthcare facility
- ♥ 37% received, or felt that they needed to receive, services for mental health
- ♥ 14% have ongoing issues with police or courts
- ♥ 8% used opiates or heroin in the last 30 days. for mental health

The top three needs requested at Eddy House are:
Housing Jobs Food

Donate today at www.eddyhouse.org



*Youth PIT Count is conducted by Nevada Youth Empowerment Project and Build Our Center



Lynette Eddy, Founder

EDDY HOUSE

House of Help. House of Hope.

Proposed 24 Hour Drop-In Center

- ♥ A co-ed safe space for youth under 24 to sleep safely
- ♥ Up to 10k square feet of space for facility
- ♥ Working kitchen, showers and bathrooms
- ♥ Classroom space
- ♥ Basic needs including clothing and food
- ♥ Technology center
- ♥ Art and behavioral therapy
- ♥ Job Skills training and placement
- ♥ Health and wellness education
- ♥ Facilitation of legal identification, insurance and community resources

Eddy House is a data-driven agency. We've made a commitment to our donors, grantor's and community to pioneer and champion homeless youth data collection. Here are the numbers representing the experiences of homeless youth here and across the nation:

HUD Youth Point in Time Count Statistics*

*Youth PIT Count is conducted by Nevada Youth Empowerment Project and Build Our Center

- ♥ Only 17% access the adult shelter
- ♥ 54% would take housing at a youth shelter if it were offered today
- ♥ 51% have stayed somewhere with someone they did not know or trust

National Statistics

According to a study of youth in shelters, nearly 50% reported intense conflict or physical harm by a family member as a major contributing factor to their homelessness.

We can save the City of Reno money in the long term.

According to the US Interagency Council on Homelessness "The estimated cost to the city for 1 homeless person is \$30-50k per year for shelter, ER and jails."

If only 1/2 of Eddy House kids are sick, jailed or in shelters the conservative estimate will cost the City of Reno over 10 Million Dollars.

Affordable Housing is not just an issue for the homeless in Northern Nevada. One-third of households have income below \$35k and cannot afford the median rent of \$875 locally. *

*2017 Housing Study Truckee Meadows Regional Planning Committee & ECON Northwest

Eddy House Statistics*

*As of June 2017 Eddy House Intake Survey Data

- Immediate Needs**
 - ♥ 77% are safer on the streets than they were at home
 - ♥ 29% do not have a support system
 - ♥ 72% requested help finding housing
 - ♥ 70% are unemployed
 - ♥ 45% exchanged sex or labor for food, shelter, or clothing
 - ♥ 41% can not meet their basic needs because they don't have enough income or resources
- Contributing Factors**
 - ♥ 92% have experienced the loss of a parent or loved one
 - ♥ 57% received mental health services
 - ♥ 25% hospitalized for mental health statistics
 - ♥ 80% have been arrested
 - ♥ 45% in Foster Care - 18% Aged out of Foster Care
 - ♥ 65% moved frequently as a young person ; 20% moved more than 20x
 - ♥ 55% became homeless before 18
 - ♥ 22% have a physical health diagnosis

The attached document was submitted to the
Washoe County Board of Commissioners during
the meeting held on September 26, 2017.
by Michelle Gehr
for Agenda Item No. 6
and included here pursuant to NRS 241.020(8).



EDDY HOÛSE

Michele Gehr, MSSW

Executive Director

423 East 6th

Reno NV

(between Valley and Record)



Eddy House

- Serves primarily non-system youth
- Eddy House saw 504 individual youth in 2016
- In 2016, we had 6,194 youth interactions/visits.
- As of May 1st, 2017 we have seen 390 individual youth.
- In the first 4 months of 2017, we have had nearly 3,000 youth interactions/visits.

- We strive to not duplicate youth services offered in the community.

- 93% have lost a parent, family member or close friend
- 43% have previously been in Foster Care (system youth)
- 83% moved more than 5 times as a child

Central Intake and Assessment Drop-in Resource Facility for Homeless Youth

- Under 24
- 13% of Eddy House visitors are under the age of 18 and were referred to WCDSS.
- 67% are from Washoe County; 6% are from rural Nevada.
- Basic Needs: showers, clothing, food, safe place
- Resources: medical, dental, education
- Psycho-social education: job skills, life skills, social and emotional skills and goal setting
- Mental health: addiction counseling, healthy relationships, anger management, music therapy, grief and loss therapy

Eddy House population

- 100% trauma affected
- 59% have received treatment for mental health
- 60% have no education
 - 70% had an IEP or 504 plan when in school
- 89% have been arrested at least once
- 92% live on the streets; in motels; couch surf
- 70% report that they are safer on the streets than they were at home
- 58% of homeless youth in Reno have exchanged sex or labor for food and shelter

Eddy House Client Intake Forms as of April 1, 2017

Nevada Stats

- Overall, Nevada ranked 5th in the nation for the rate of homeless persons who are unsheltered, as a percentage of the total number of people experiencing homelessness.

HUD 2015 Annual Homeless Assessment Report

- For every 100k people we have 256 homeless people.

USICH.gov

- One-third of households have a median income below \$35,000 and cannot afford the median rent(\$875)

Truckee Meadows Regional Planning Agency Report Feb. 2017

Cost to Community

- US Interagency Council on Homelessness estimates that the annual cost to a city for 1 homeless person to be between \$30,000-\$50,000.
 - If $\frac{1}{2}$ of our youth are arrested, use the shelter, or the ER it will cost the City of Reno \$10 million dollars per year.
- Increased blight and crime downtown
- Higher rate of human trafficking

Homeless youth are homeless for different reasons than adults

- Homeless youth do not identify as being homeless.
- 75% of homeless youth will realize their mental illness by 25.
- A homeless youth is 5X more likely than an adult to sleep in a place not meant for human habitation.
- Less than 8% of our homeless youth use the VOA shelter.

2017 Homeless Youth Point in Time Count

Eddy House participated by being a survey location.

- 54% would take housing at a youth shelter if it were offered today.
- Only 17% access the adult shelter
- 51% have stayed somewhere with someone they did not know or trust
- 51% report losing housing over sexuality or gender identity.
- 14% have ongoing issues with police or courts.
- 45% stayed overnight in a treatment or healthcare facility
- 37% received, or felt that they needed to receive, services for mental health.
- 67% stayed overnight or longer in jail, prison, or a juvenile facility.

2017 HUD Youth Point In Time Count data collected by surveying street youth for 24 hours count is coordinated by Nevada Youth Empowerment Project and Our Center.

Why Don't Homeless Youth Use Adult Shelters?

- No Pets Allowed
- Denied Entry Due to Mental Illness
- **Discrimination Against LGBTQ People**
- **Fear of Contracting Parasites like Lice, Scabies, Pubic Lice, or Bedbugs**
- Hours of Operation Incompatible with Work Hours
- **Danger of Rape or Assault**
- Fear of Contracting Disease
- An Invasive and Disrespectful Check-In Process
- Lack of Handicapped Accommodations
- Drug Addictions
- Separation of Family Members
- Some Service Dogs are Barred from Entry
- Staff Assumptions about Drug Use and Criminality
- **Danger of Theft**
- Religious Differences
- Lack of Privacy and Fear of Crowds
- Lack of Control
- Rules That Unfairly Endanger Disabled Individuals
- Lack of Available Beds

Nevada Youth Empowerment Project 2017

Young people see themselves being homeless for different reasons than adults.
They really do see themselves in a temporary or transitional state.

Eddy House, Today

- Relationship-based programming
- Social and Emotional Learning
- All resources at a single location
- Physically and psychologically safe
- Behavior contracts enforced
- Plans for a 24-hour drop-in center downtown

Eddy House, Tomorrow

- Strengthen current process, programming and funding streams
- Increase hours within the drop-in program
- Continue partnering with agencies working on a full continuum of care
- Expand Eddy House to include a 24 hour drop-in center

Questions?

Michele Gehr, Executive Director

director@eddyhouse.org

775-384-1129

Monday-Friday 10:00 a.m. to 5:00 p.m.

www.eddyhouse.org